



EWP Registration Portal and EWP Admin authentication

Giving control back to HEIs

Nikos Liolios

Senior Erasmus+ Officer
Aristotle University of Thessaloniki






<https://registrationportal.erasmuswithoutpaper.eu/>


Registration Portal

Register your manifest files in the EWP Network.

If you are an EWP Admin of a HEI, please use the button below to access the portal through MyAcademicID that provides you access to your HEI online systems.

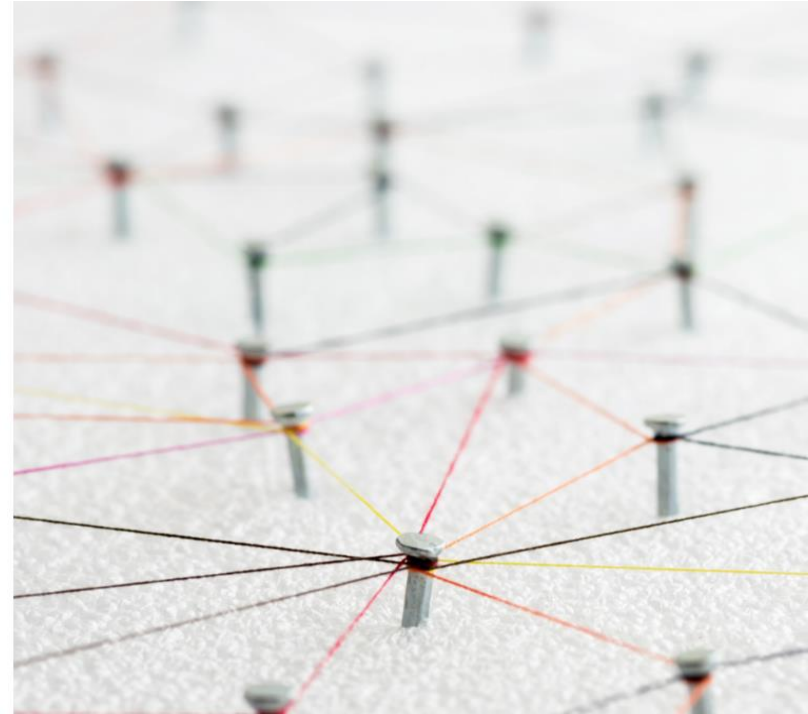
[Login as HEI](#) 

If you are a mobility management software provider and you already registered, please access the portal on the button below.

[Login as Provider](#) 

Are you a new mobility management software provider to the EWP Network or did you not register in the Registration Portal yet?

[Register as Provider](#)



Developed by the European Digital Student Service Infrastructure (EDSSI) project, funded by Connecting Europe Facility programme





Aim

- optimize and automate the provision of manifest files into the EWP system (ie EWP Registry)
- more accessible way to manage all the manifest files within the EWP network





Benefits

Eventually all manifest files will come from the Registration Portal and the local list of the Registry will be removed

Great amount of manifest-related information is stored in the system, such as:

- who provides the manifest;
 - when was the manifest added to the system;
 - which institution is supported by the manifest;
 - does an institution have duplicate APIS;
 - how many manifests a provider has;
- and many other metrics.





How does it work

The Portal is divided into two users pages

- a) HEIs (Higher Education Institution)
- b) 3PPs (3rd Party Provider)





How to join

Registration Portal

Register your manifest files in the EWP Network.

If you are an EWP Admin of a HEI, please use the button below to access the portal through MyAcademicID that provides you access to your HEI online systems.

Login as HEI



If you are a mobility management software provider and you already registered, please access the portal on the button below.

Login as Provider



Are you a new mobility management software provider to the EWP Network or did you not register in the Registration Portal yet?

[Register as Provider](#)



Authentication in EWP RP and beyond

The **EWP Admin role** (Erasmus Without Paper Administrator role) enables authorized representatives of Higher Education Institutions (HEIs) participating in Erasmus+ activities to login in a federated manner to EWP tools to manage their EWP information and settings.

<https://wiki.geant.org/display/SM/EWP+Admin+Role>



[Add new manifest](#)

Please, choose your provider:

[Own System](#)[Dashboard](#)[Other Provider](#)

Please, upload the MoU signed to proceed. If you don't have it, please download it [here](#).

[Choose File](#)

No file chosen

I understand that, by submitting this MoU file, I acknowledge that the Institution that I represent (Aristotelio Panepistimio Thessalonikis) is the owner of the services which will be provided in the EWP network. I also understand that these services are implemented in a system developed by Aristotelio Panepistimio Thessalonikis.

[Submit MoU](#)



HEIs page

The implementation of the HEIs' page allows the HEI representative to

- see their manifest files,
- see the APIs supported by each one, and
- add new ones, whether supported by themselves or 3PP





How to join

Registration Portal

Register your manifest files in the EWP Network.

If you are an EWP Admin of a HEI, please use the button below to access the portal through MyAcademicID that provides you access to your HEI online systems.

Login as HEI



If you are a mobility management software provider and you already registered, please access the portal on the button below.

Login as Provider



Are you a new mobility management software provider to the EWP Network or did you not register in the Registration Portal yet?

[Register as Provider](#)



3PPs page

The 3PP page

- lists the submitted manifests of a particular provider and
- allows for the addition of new ones which will be validated and approved after testing.

These manifest files can be used by those HEIs that the particular manifest supports.





Nikos Liolios

Senior Erasmus+ Officer
Aristotle University of
Thessaloniki



<http://support.erasmuswithoutpaper.eu>



[join the EWP
LinkedIn group](#)



[Follow EWP on
twitter](#)

